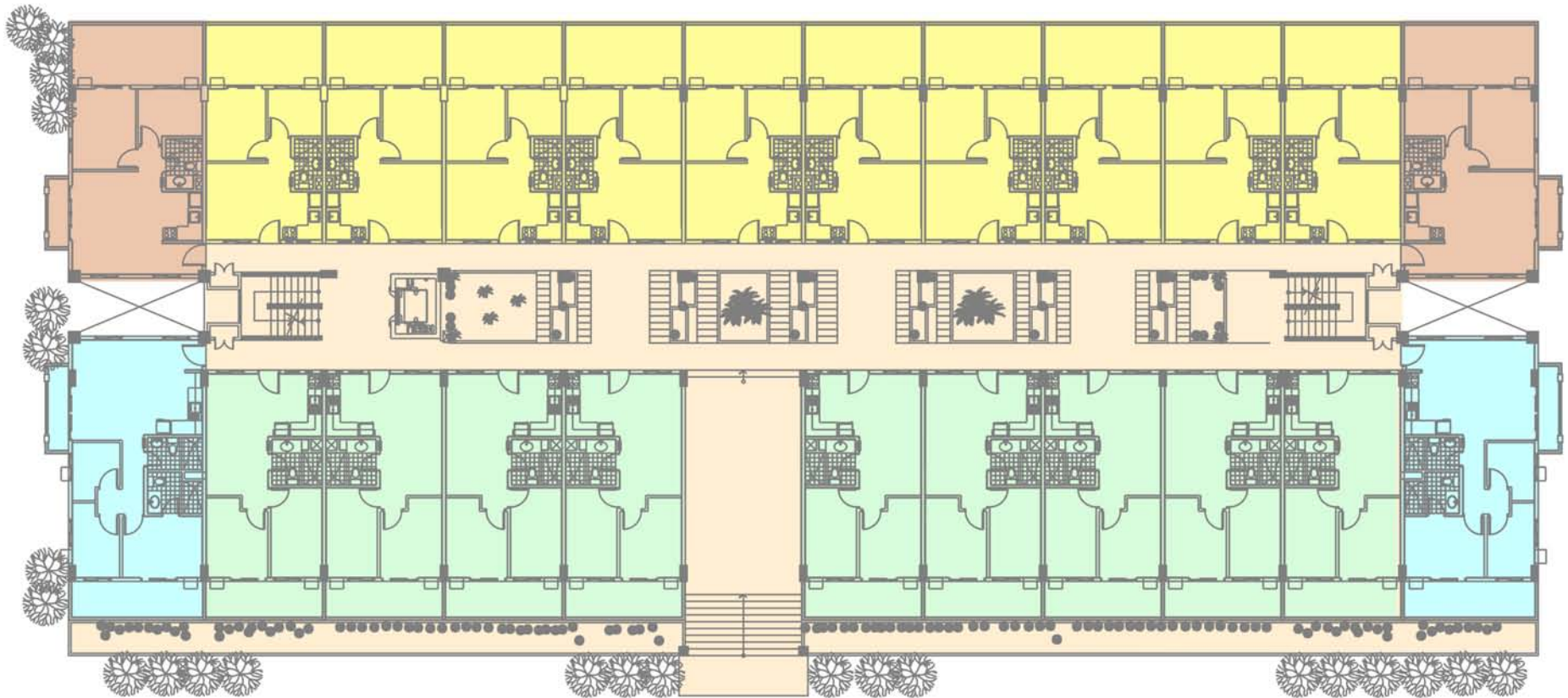


# CITRINE BUILDING



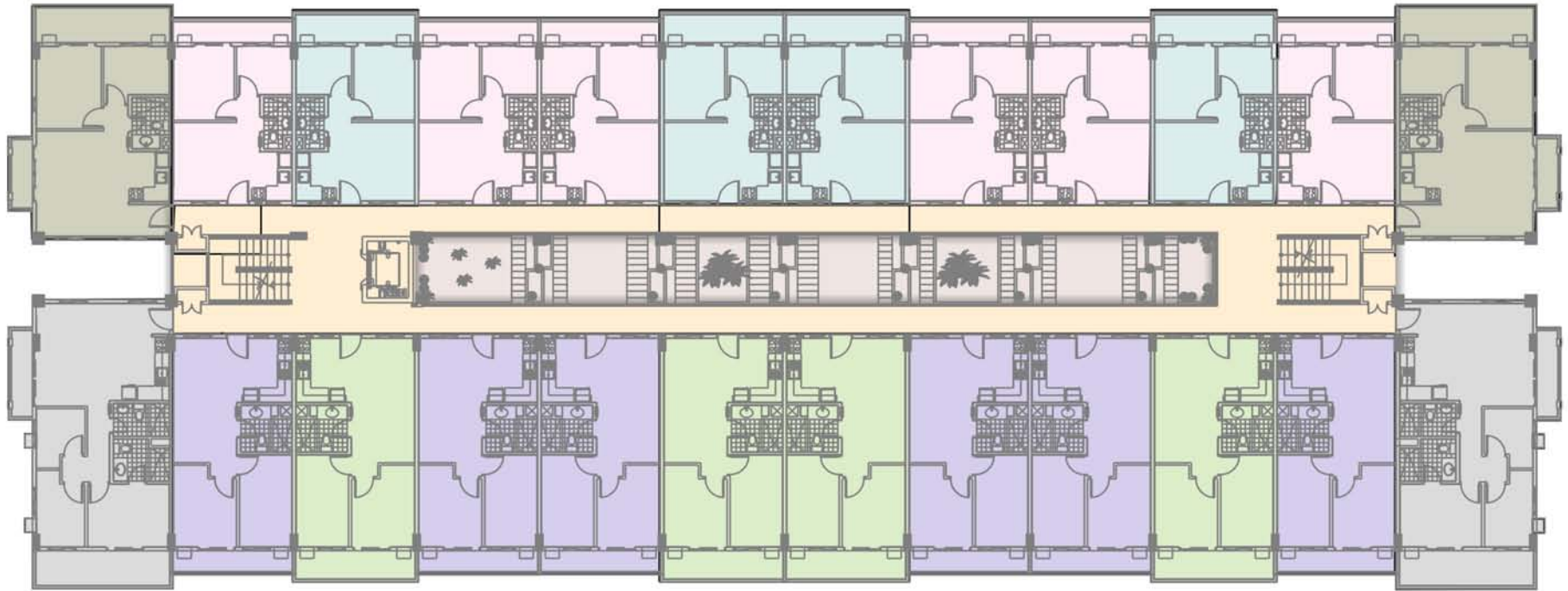
-  **3 Bedroom Unit with Balcony**  
approx. 66.5 sqm
-  **2 Bedroom Unit with Balcony**  
approx. 52.5 sqm
-  **3 Bedroom Unit with Balcony**  
approx. 77.5 sqm
-  **2 Bedroom Unit with Balcony**  
approx. 58.5 sqm


# UPPER GROUND floor

UPDATED SINCE AUGUST 2010


"Floor plans reflected as visuals are not to scale. Actual configurations and features may vary per unit. Please check with your seller the specifications of the particular unit you are interested on or purchasing."

# CITRINE BUILDING





 **2 Bedroom Unit with Balcony**  
approx. 62 sqm

 **3 Bedroom Unit with Balcony**  
approx. 77 sqm

 **2 Bedroom Unit with Balcony**  
approx. 42.5 sqm

 **2 Bedroom Unit with Balcony**  
approx. 55 sqm

 **2 Bedroom Unit with Balcony**  
approx. 43 sqm

 **2 Bedroom Unit with Balcony**  
approx. 55.5 sqm



# 2nd-5th floor

UPDATED SINCE AUGUST 2010

"Floor plans reflected as visuals are not to scale. Actual configurations and features may vary per unit. Please check with your seller the specifications of the particular unit you are interested on or purchasing."